

Facts & Figures

Thanks to modern technology and research advances, **one** farmer today is able to produce enough food to feed **144** people per year.

Approximately **85%** of U.S. grazing lands are unsuitable for crop production. Grazing animals on this land more than doubles the area that can be used to produce food.

U.S. government data indicates **99.99%** of all meals are consumed safely without incident.

Pennsylvania equine owners devote **1,140,000 acres** of land for equine purposes. The equine industry provides **20,300 jobs** annually in Pennsylvania.



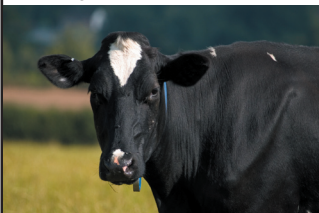
The current USDA recommendation for the consumption of protein is **63** grams a day for adult men and **50** grams a day for adult women.

Over the last 20 years, total U.S. meat production increased **50%**, milk production increased almost **20%** and egg production increased about **32%**, while at the same time, thanks to modern technology, Green House Gas (GHG) emissions have **remained nearly constant**.

Did You Know?

Of the **300 million** people living in the United States, less than two million - or **less than 2%** - are directly involved in raising animals and crops to feed our nation.

Today **98%** of all U.S. farms are owned by individuals, family partnerships or family corporations.



Livestock and poultry are fed grains because they are **nutritious, energy-rich, and can be stored** for use throughout the year. Because grass doesn't grow year-round in most of the U.S., feeding grains helps farmers raise a consistent, year-round supply of great-tasting products.



All U.S. meat and poultry is subject to the same stringent government regulations and inspections that **ensure safety**, regardless if organic or conventionally produced.

Animals are generally kept in barns and similar housing, with the exception of beef cattle and sheep, to protect the health and welfare of the animal. Housing **protects animals** from predators, disease, and bad weather or extreme climate.

Fish is a great source of **protein, vitamins and minerals**, and is naturally low in calories. USDA recommends two meals/week of Omega III Fatty Acids - trout is an excellent source!

Resourceful Web Sites

www.aeb.org
www.agriculture.state.pa.us
www.amseed.org
www.animalagalliance.org
www.bestfoodfacts.org
www.centerfordairyexcellence.org
www.cfiengage.com
www.farmersfeedus.org

www.papork.org
www.pasafarming.org
www.pasoybean.org
www.pennag.com
www.pennsylvaniaequinecouncil.com
www.safefoodinc.com
www.thenaa.net
www.usda.gov

We need to be ready to explain the good work of today's agriculture.

What can YOU do to stand up for the agriculture industry and against anti-agriculture propaganda?